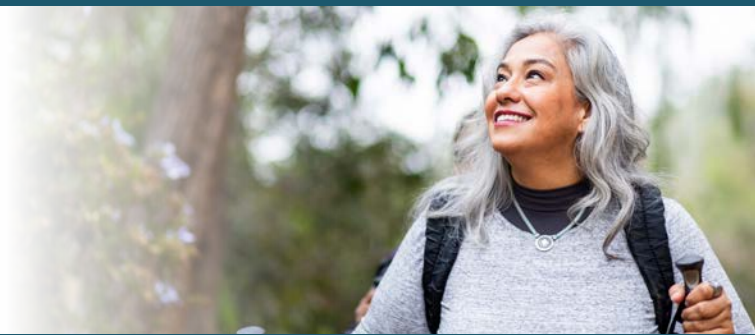


# KAISER PERMANENTE MEDICARE ADVANTAGE (HMO) PLANS FOR RESIDENTS OF MARYLAND

## HEALTH CARE WITHOUT COMPROMISE

Medical and prescription drug coverage  
for as little as \$0 a month



Choose Kaiser Permanente Medicare Advantage for affordable, convenient care and much more

### Great extras with your plan:



#### NEW FOR 2023

#### **Comprehensive dental plan with expanded provider network**

Plans include a NEW comprehensive dental plan with an expanded network of dental providers, \$0 for preventive care office visits (such as oral exams and cleanings), and a \$1,000 annual allowance<sup>1</sup> on more extensive care, such as dentures, fillings, and root canals.



#### **Hearing aids**

Plans include a \$1,000 hearing aid allowance<sup>2</sup> per ear, every 36 months, as well as coverage for hearing exams, to use at Kaiser Permanente audiology centers. Visit [kp.org/hearingcare](https://kp.org/hearingcare) to view our audiology locations, conveniently located in many of our medical centers.



#### **Eyewear allowance and vision care**

Get coverage for routine eye exams, glaucoma and cataract screenings, and an allowance on glasses and contact lenses. Visit [kp2020.org](https://kp2020.org) to view our optical locations, conveniently located in many of our medical centers.



#### **Over-the-Counter (OTC) wellness benefit<sup>3</sup>**

Our Medicare health plans include a quarterly OTC benefit that can be used to order items such as vitamins, allergy and cold remedies, pain relievers, first aid kits, diabetic supplies, and much more.



#### **Transportation to medical appointments**

Our plan includes 24 one-way rides per contract year for nonemergency medical appointments at Kaiser Permanente medical centers and contracted facilities at no extra cost. Call **1-855-932-5412**, 24 hours a day, 7 days a week, to schedule a ride.



#### **Medicare Explorer<sup>4</sup>**

Travel with peace of mind knowing that Kaiser Permanente Medicare Advantage plans include Medicare Explorer, a \$1,200 annual allowance for out-of-area routine and continuing care. Your allowance could be used for office visits, labs, X-rays, physical therapy, outpatient behavioral health care, and more.



**KAISER PERMANENTE®**

### Not a member yet?

Contact a Medicare licensed sales specialist now.

Medicare licensed sales specialist

<sup>1</sup> With a 50% coinsurance. Dental benefits administered by Dominion National.

<sup>2</sup> Can only be used for hearing aids purchased at Kaiser Permanente audiology centers.

<sup>3</sup> Please refer to your Evidence of Coverage for details. OTC benefits may change each year on January 1. Each order must be at least \$20. Any unused portion of the quarterly benefit limit will not carry forward to the next quarter. Your order may not exceed your quarterly benefit limit. Limitations and restrictions may apply. Cash, check, credits cards, or money orders are not accepted.

<sup>4</sup> Not available with Kaiser Permanente Medicare Advantage Value Baltimore (HMO), and Kaiser Permanente Medicare Advantage Value MD (HMO). Members are responsible for any charged amounts for covered services that exceed the annual allowance maximum of \$1,200. Coverage limited to inside the United States and its territories. See your *Evidence of Coverage* for details.

Services	Kaiser Permanente Medicare Advantage Value Plan (HMO) Balt and MD with Part D	Kaiser Permanente Medicare Advantage Standard plan (HMO-POS) with Part D
<b>Premium</b>	\$0	\$23
<b>Office visit</b>	\$10 per visit, primary care \$40 per visit, specialists	\$10 per visit, primary care \$35 per visit, specialists
<b>Labs</b>	\$0	\$0
<b>X-rays</b>	\$20	\$15
<b>Other imaging like MRI, CT, and PET</b>	\$190	\$100
<b>Inpatient hospital per admission</b>	\$300 per day for days 1 – 5, and \$0 for the rest of your stay	\$270 per day for days 1 – 5, and \$0 for the rest of your stay
<b>Outpatient surgery</b>	\$300 per visit	\$250 per visit
<b>Physical therapy</b>	\$40 per visit	\$35 per visit
<b>Emergency room</b>	\$95 per emergency department visit	\$95 per emergency department visit
<b>Urgent Care</b>	\$40 per office visit	\$35 per office visit
<b>Ambulance</b>	\$275 per one-way trip	\$275 per one-way trip
<b>Eyewear allowance</b>	\$200 every 24 months	\$200 every 24 months
<b>Routine eye exam</b>	\$10 per optometry visit \$40 per ophthalmology visit	\$10 per optometry visit \$35 per ophthalmology visit
<b>Over-the-counter (OTC) wellness benefit</b>	\$30 quarterly benefit limit	\$50 quarterly benefit limit
<b>Medicare Explorer by Kaiser Permanente</b>	Not available	\$1,200 annual allowance for out-of-area routine care, such as office visits and labs. See your <i>Evidence of Coverage</i> for details.
<b>Silver&amp;Fit Healthy Aging and Exercise Program<sup>5</sup></b>	Not available	Includes membership with a local participating Silver&Fit fitness center and digital fitness and well-being choices
<b>Prescription drugs, Mail Order Pharmacy, Tiers 1 and 2<sup>6</sup></b>	\$0 up to a 90-day supply	\$0 up to a 90-day supply

For additional details about these benefits, view the *Evidence of Coverage* at [kp.org/eocmasma](https://kp.org/eocmasma).

<sup>5</sup> Not available with Kaiser Permanente Medicare Advantage (HMO) Balt and MD Value plans. The Silver&Fit program is provided by American Specialty Health Fitness, Inc. (ASH Fitness), a subsidiary of American Specialty Health Incorporated (ASH). Silver&Fit is a registered trademark of ASH and used with permission herein. All programs and services are not available in all areas. Participating fitness centers and fitness chains may vary by location and are subject to change.

<sup>6</sup> For certain drugs, you can get prescription refills mailed to you through our Kaiser Permanente Mail Order Pharmacy. You should receive them within 3-5 days. If not, please call **1-800-733-6345** (TTY **711**), 24 hours a day, 7 days a week. Some medications are not eligible for Mail Order Pharmacy. Mail Order Pharmacy can deliver to addresses in MD, VA, DC, and certain locations outside the service area.



Kaiser Permanente is an HMO and HMO-POS plan with a Medicare contract. Enrollment in Kaiser Permanente depends on contract renewal. You must reside in the Kaiser Permanente Medicare health plan service area in which you enroll.